

Self-Lay - Fit Meter And all Things Smart Metering

10th March 2025



UK Smart Metering Market



At Scale Adopters – Procurement complete



At Scale Adopters – Procurement underway



Small Scale Adopters



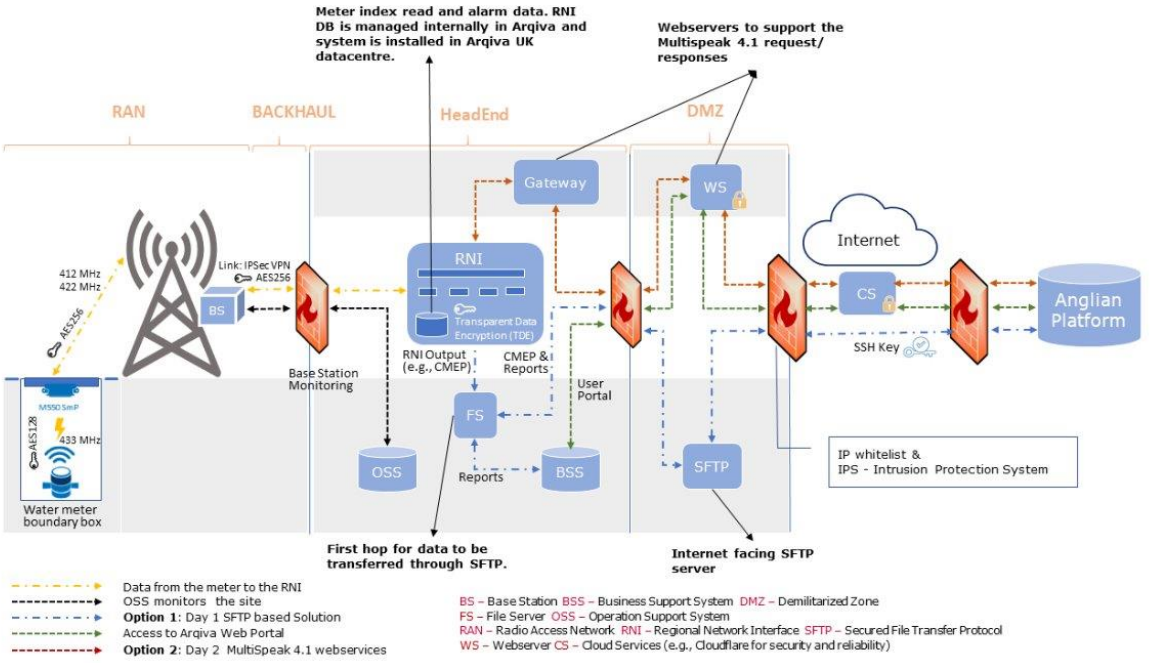
AMR



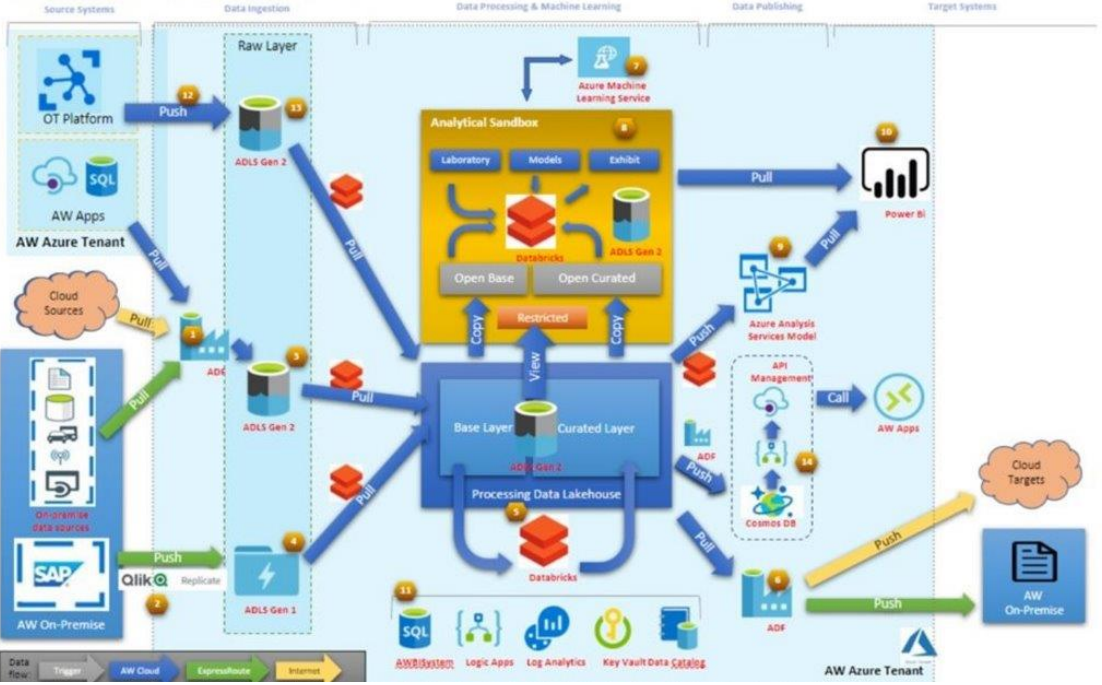
AMP 7 = 2.6M meters (1.1M AWS, 1M TWS)
AMP 8 = 10.6M meters – and climbing

Welcome to the world of systems

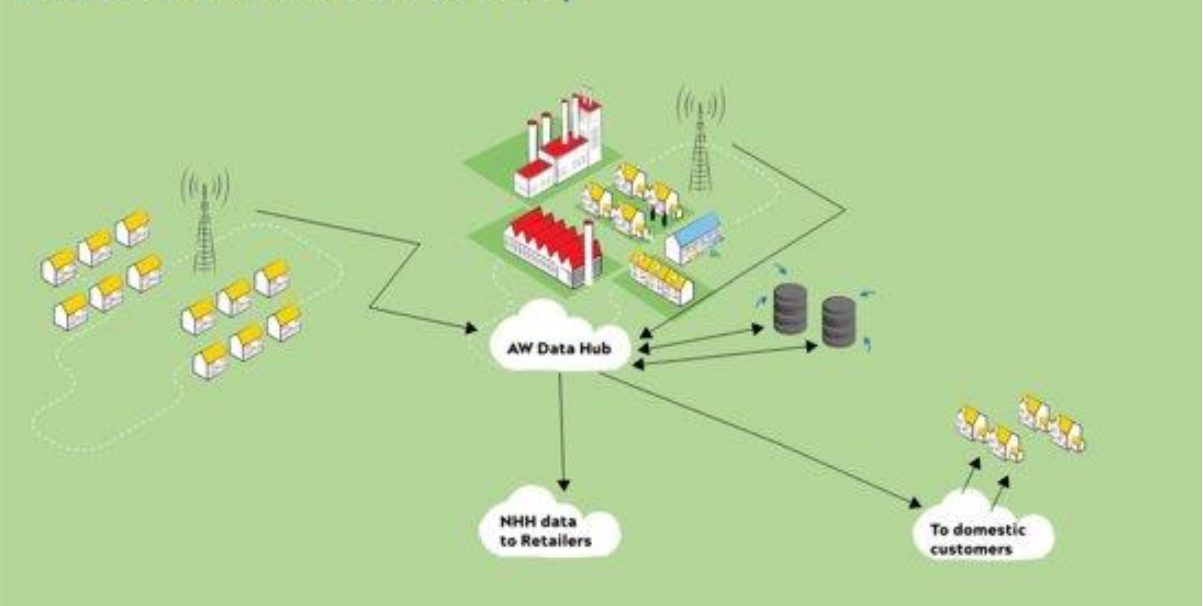
- Currently 24 million reads per day, 8.8Bn / year
- Around 130,000 leaks per year identified
- 31% of customers have signed up for hourly data



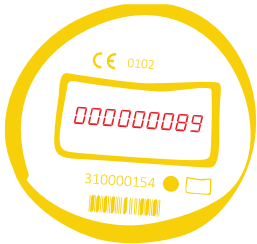
AWBI High Level Architecture V2.2



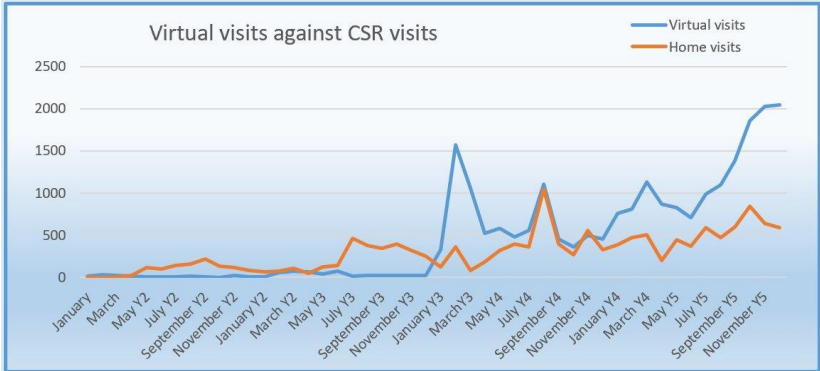
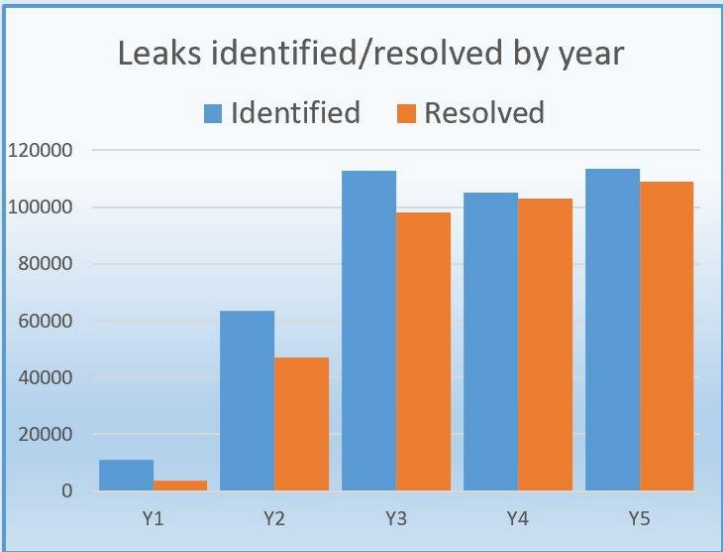
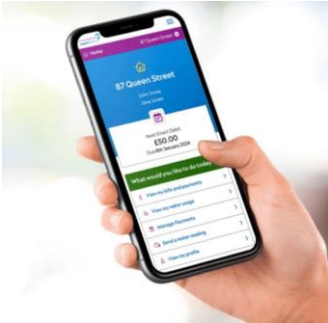
AMI Smart Meter Data Journey



Smart Meter Benefits



- AMI data is used for leak identification, accurate billing, keeping customers informed and Water Efficiency.
- Using AMI data to identify leaks has allowed the scale of our leakage programmes to greatly increase.
- In just 4 years we have investigated **365,000 leaks** using the data.
- Customers can check their own AMI readings via MyAccount



The use of data to identify leaks has allowed us to contact more customers about potential leaks by phone, email and letter, meaning we can inform more customers and more efficiently.

Key changes to the Self Lay Process



SLP's can fit meters and end points at connection (you no longer need to wait for our CSR to attend and complete the Water Regulations Internal Inspection).

In Charges 2025 there will no longer be a discount for Underground inspections – this is because AW no longer carry out this visit either.

Once the meter has been fitted The SLP will notify us – if required the CSR will attend to fit the Endpoint only.

There is no discount for Internal water regs as there is no approved plumber visits required on these jobs from April 2025.

If you chose to ask AW to fit the meter and end point this will also be fitted after connection to ensure consistency on all SLP jobs.

Note - For the first 6 months after the new process goes live, we will undertake random audits of new Self-Lay sites internal plumbing & review this data afterwards.



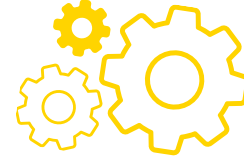
Summary of SLP Meter Fit options



There will be three options, outlined below for our SLP's in future.
The table below gives the charge for each connection.

Option	Service	Cost
1	SLP fit the Radio meter and Endpoint	£267
2	SLP fit the Radio meter, AW fit the Endpoint	£334
3	AW fit the Radio meter and Endpoint	£340

What else is involved?



- Training - so the SLP Field Resources know how to pair a Meter with an end point
- SLP's will need to purchase pairing device (SIRT)
- SLP's need to install the field logic tool which allows the pairing to work (there are also updates of this software 2/3 times a year. This tool can only be installed on windows device.
- There is charge for Meters not paired correctly
- Link to paring video

[Video.mov](#)